



SEAM SPATIAL



SMART BATHYMETRIC SURVEYING

Get faster and more accurate underwater topography and depth mapping in challenging areas. SEAM Spatial's hydrographic data collection and analysis is built on the latest technology and led by a team with years of experience.



Measure accurately to manage effectively



Meet obligations without impacting operations



Mitigate environmental consequences

seamspatial.com.au

WHAT WE SURVEY

Specialising in all types of bathymetric surveys at open-cut mines and dams, SEAM Spatial provides **detailed and timely information** about your water capacity. Our volume curves, topographic models and 3D models support:



MINING

- Tailing dam management
- Resource allocation
- Regulatory compliance



COAL-SEAM GAS

- Produced water storage
- Environmental monitoring
- Infrastructure planning



AGRICULTURE

- Water storage optimisation
- Erosion control
- Expansion planning



WATER

- Flood management
- Water distribution
- Dredging operations



WHAT WE DELIVER

Depending on your body of water, the conditions at your site and your data requirements, the SEAM team will pair you with the **quickest turnaround solution** that provides the essential insights to support your project.

Determine your surveying solution

The size, accessibility and safety of your body of water will determine what technology we'll use to conduct your bathymetric survey.



Develop an efficient route plan

High-speed boats with pre-programmed autopilot pathing and anti-collision technology—alongside the option of versatile drones – minimise survey time.



Share in-depth insights and reporting

You'll receive reporting of water volume at every 100 mm vertical increment, together with whole-of-catchment data and environmental modelling.



Conduct your bathymetric survey

Dual-frequency sonar technology and robust equipment mean that we can survey through vegetation, obstructions and tough environments.



HOW WE DO IT

SEAM Spatial’s innovative ‘bathy boats’ and ‘bathy drones’ are changing the way we perform precise bathymetric surveys.

TECHNOLOGY

We’re **one of the few surveyors in Australia** to offer underwater surveys using an aerial vehicle, alongside our trusted manned and unmanned surface vehicles.

Remote-controlled boats



Our **Apache 3 Pro** uses a D270 echosounder, rugged design and enhanced navigation systems to enable efficient data collection in tough conditions – with seamless connectivity.

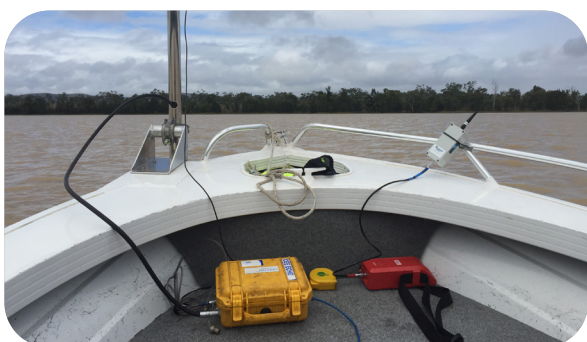
Our reliable **Accura** uses high-precision RTK GNSS and a dual frequency echosounder to conduct surveys from 0.3 to 100 m in depth – at a range of up to 700 m.

Unmanned aerial vehicle (UAV)



Our unique integrated **DJI M300** drone system collects precise measurement data using an EchoLogger ECT 400 sounder, alongside a UgCS onboard computer for complex mission planning.

Manned boat



Our **bathymetric surveying team** is experienced in large-scale and deep-water surveys. They can provide real-time analysis and decision-making support to keep your project moving.

DATA OUTCOMES

With powerful bathymetric solutions – **developed and tested in Australia** – we provide underwater geological and hydrographic data that other surveyors can't.



Depth measurements



Topography maps



Substrate data



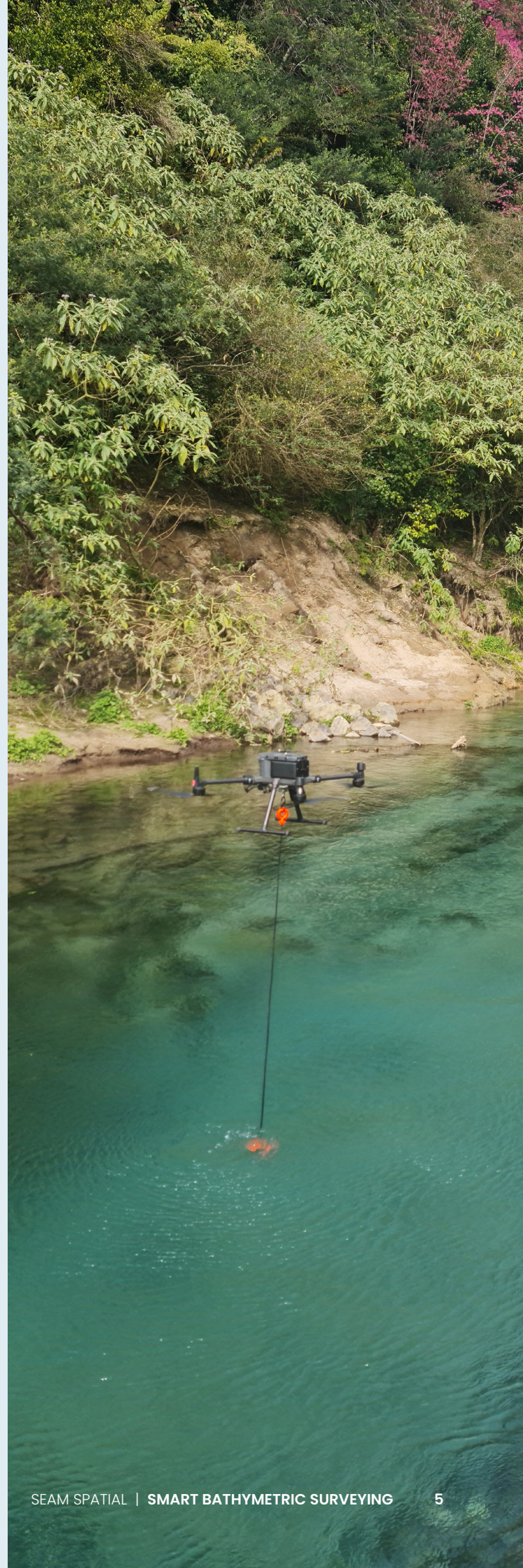
Obstruction identification



Hydrological features



Volume calculations



HOW IT SUPPORTS YOU

Accurate underwater measurements are crucial for infrastructure planning and resource management. Without a **reliable surveying partner**, you can experience costly errors, environmental damage and safety hazards on site.

Prevent delays and reduce expenses

Establishing access at some sites can be costly, dangerous and take time. Remote and aerial surveying solutions need **minimal-to-no safe access**.

Boost your asset efficiency

Maintaining water storage capacity data dramatically improves productivity at your site and enables **smarter decision-making**.

Avoid unforeseen consequences

Minimising uncontrolled offsite releases will ensure that you meet **your regulatory obligations** and safeguard the environment.



WHAT MAKES US DIFFERENT

The SEAM philosophy is to adopt **cutting-edge technology** that's both reliable and beneficial for our clients. Our dedication to both deploying innovative equipment and developing our people is what sets us apart from "point-and-shoot" surveyors.

Deep and diverse expertise

SEAM has been a leader in remote bathymetric surveying for a decade, and we have experienced team members in every state and territory.

Unique capabilities

SEAM has one of the most comprehensive bathymetric services in Australia, with a UAV offering that's unrivalled by any other surveying consultancy.

Investment in technology

SEAM is always exploring new ways to collect precise data autonomously and efficiently – so our clients can focus on their projects.

WHO TRUSTS OUR RESULTS

aurecon

BHP

THE
Bloomfield
GROUP

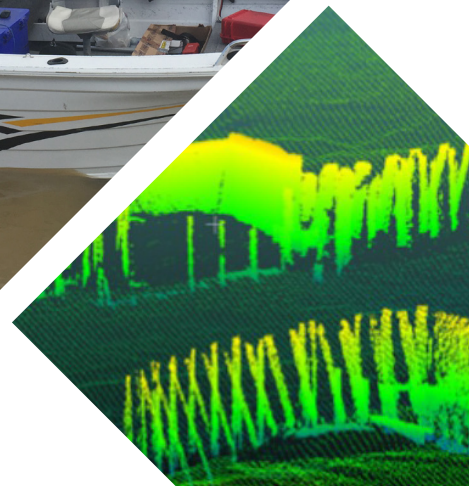
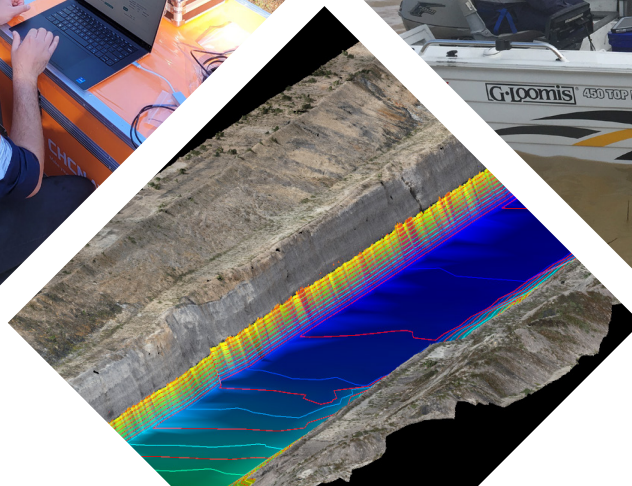
GLENCORE

MMG

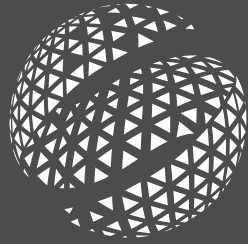
Peabody

sunwater

YANCOAL
兗煤澳大利亚有限公司



READY TO MAKE BATHYMETRIC SURVEYING EASIER THAN EVER?



SEAM SPATIAL



AUSTRALIA
(CORPORATE OFFICE)

+61 (0)7 3408 2735
admin@seamspatial.com.au

NEW
ZEALAND

+64 (0) 21 505 192
nzadmin@seamsurveys.co.nz

Brisbane Technology Hub: 19/ 11 Buchanan Road, Banyo QLD 4014

seamspatial.com.au